

INTERNATIONAL MILITARY SPORTS COUNCIL

CISM



CISM SAILING REGULATIONS

2008



TABLE OF CONTENTS

TABLE OF CONTENTS	1
1 HISTORY	3
2 COMPOSITION OF THE TECHNICAL COMMITTEE FOR SAILING	3
3 APPLICABLE REGULATIONS.....	3
4 ORGANIZATION OF CHAMPIONSHIPS.....	4
5 LANGUAGES	5
6 GENERAL PROVISIONS REGARDING THE ORGANIZATION OF THE CHAMPIONSHIP	5
6.1 The CISM Technical Committee for Sailing.....	5
6.2 The Organizing Committee.....	5
6.3 The Race Committee.....	6
6.4 The Protest Committee.....	6
6.5 The Jury of Appeal.....	6
6.6 The Equipment Committee.....	6
6.7 The Official CISM Representative (OCR)	6
6.8 Chiefs of Mission	6
7 PARTICIPATION AND ELIGIBILITY	7
8 CHAMPIONSHIP SCHEDULE	7
9 PRELIMINARY MEETING	9
10 TECHNICAL COMMITTEE ENLARGED MEETING	9
11 BOATS.....	10
12 COURSE LENGTH AND NUMBER OF RACES.....	11
13 SUPPORT BOOTHS.....	11
14 AWARDS	11
14.1 CISM Sailing Challenge Cup.....	11
14.2 Medals.....	11
14.3 Badges and Diplomas.....	11
14.4 Fair Play Award	11
15 DOPING CONTROL	12
ANNEX A: FORMS.....	A-1
▪ INVITATION FILE	A-2
▪ INFORMAL AGREEMENT	A-3



ANNEX B

- **FINAL ENTRY..... A-4**
- **COMPOSITION OF DELEGATION..... A-5**
- **COMPETITOR INFORMATION..... A-6**

- **COMMITMENT BY THE CHIEF OF MISSION A-7**

ANNEX B: SAMPLE SAILING INSTRUCTIONS..... B-1



competition, CISM Sailing Regulations and the current ISAF Racing Rules of Sailing (RRS) will be followed.

- 3.4. The Protest Committee will handle all protests as detailed in the ISAF Racing Rules of Sailing (RRS). This committee will perform the role of Technical Jury as specified in CISM Policy and Procedures manuals.
- 3.5. Appeals against the decisions of the Protest Committee shall be handled by the Jury of Appeal as specified in CISM Policy and Procedures manuals except where there is a non-appeal able International Jury constituted in compliance with the current ISAF RRS.
- 3.6. Situations requiring resolution that are not covered by CISM Policy and Procedures, the ISAF Racing Rules of Sailing (RRS) or the CISM World Military Sailing Regulations will be decided by the Technical Committee. These decisions will remain in force only for that particular competition.
- 3.7. The host country CISM Delegation is responsible to ensure that the Organizing Committee is in possession of the most current versions of the following regulations, which will guide the Organizing Committee in the organization of the championship:
 - a. CISM Policy and Procedures manuals;
 - b. CISM Sailing Regulations;
 - c. ISAF Racing Rules of Sailing; and
 - d. Class measurement rules.

4. ORGANIZATION OF CHAMPIONSHIPS

- 4.1. A CISM World Military Sailing Championship will normally be organized every year, between May and October.
- 4.2. The CISM Board of Directors approves the calendar for the organization of the CISM World Military Sailing Championship during the annual General Assembly. This calendar provides confirmation from the respective Chief of Delegation of the organizing nation for the competition to be held two years following that General Assembly and for the final calendar (with exact place and date) of the competition to be held one year following that General Assembly.
- 4.3. At list ten (10) months prior to the championship, the organizing nation must make available to the President of the Technical Committee (TC) of Sailing all pertinent information concerning the championship such as:
 - Contact information for the Chairman of the Organizing Committee
 - Confirmation of boat type
 - Draft Sailing Instructions



- 4.4. The host country Organizing Committee will organize the World Military Sailing Championship (CISM) in accordance with the regulations listed in paragraph 3 above.
- 4.5. The official designation of the championship will be:
“XXth CISM World Military Sailing Championship”.

5. LANGUAGES

- 5.1. The CISM Sailing Regulations will be prepared in English by the TC to best co-ordinate these regulations with all other CISM Policy and Procedures manuals (available in English, French, Spanish and Arabic) and ISAF Racing Rules of Sailing, since English is the common language among these regulations. These regulations will be translated to French, Spanish and Arabic if this capability exists.
- 5.2. In the event of discrepancies between the English version of the CISM Sailing Regulations and other language versions, the English version shall prevail.

6. GENERAL PROVISIONS REGARDING THE ORGANIZATION OF THE CHAMPIONSHIP

- 6.1. **The CISM Sailsport Committee (CSC)** is responsible for the overall conduct and technical supervision. The CSC will:
 - 6.1.a. review the preparations made by the organizing committee and recommend changes as required;
 - 6.1.b. meet with the President of the Protest Committee and the Chief Race Officer and in doing so finalize the Sailing Instructions.
 - 6.1.c. Conduct a sight technical inspection of all facilities for the Championship, and specifically the boats.
 - 6.1.d. Formally approve all preparations, prior to the Preliminary Meeting.
- 6.2. **The Organizing Committee**, established by the host nation, will be responsible for the organization and general conduct of the event in accordance with CISM Policy and Procedures manuals, CISM Sailing Regulations and ISAF Racing Rules of Sailing (RRS). The Organizing Committee will be responsible for the administration and support of the championship, including the provision of a suitable championship site and the required technical equipment. It should co-operate closely with the CISM General Secretariat in Brussels and the CSC President. During the championship the Chairman of the Organizing Committee should liaise closely with the CISM Official Representative and the CSC President. The Organizing Committee will produce Sailing Instructions for CSC review six (6) months prior to the event. An example of these is provided at Annex B or in



the ISAF RRS.

- 6.3. **A Race Committee** will be appointed by the Organizing Committee in accordance with the ISAF RRS and may consist of qualified military or civilian personnel. It will prepare and direct all races in compliance with the regulations listed in Article 3 above.
- 6.4. **The Protest Committee** shall be an International Jury as stated in the ISAF RRS.
- 6.5. The **Jury of Appeal** is composed of one president, who is the Official CISM Representative, and three members, who are chosen among the delegates of the participating missions, with a maximum of one per country. The Jury of Appeal is appointed during the Preliminary Meeting. The Jury of Appeal intervenes only in the following cases:
 - 6.1.a. When summoned by the Official CISM Representative; and
 - 6.1.b. Upon request of the Chairman of the Organizing Committee, the Chairman of the Race Committee the President Sailsport Committee or the Chief of the organizing country's delegation.
 - 6.1.c. Decision maid by an International ISAF Jury can not be Appeal.
- 6.6. **Equipment Committee.** During the competition there shall be an Equipment Committee chaired by a member of the CISM Sailsport Committee and made up of person or person's familiar with the equipment supplied for the competition. The Committee shall be responsible for all decisions concerning the repair or maintenance of the boats and whether a piece of supplied equipment broke through no fault or lack of seamanlike preventive maintenance of the competitor when requesting redress for a breakdown.
- 6.7. **The Official CISM Representative (OCR)** is appointed by the Board of Directors from its members to attend the championship. The Organizing Committee will assign him a place of honour, with precedence over all other CISM officials, except the President of CISM. His responsibilities are detailed in CISM Policy manual, Chapter 2.
- 6.8. **Chiefs of Mission** will be responsible for the behaviour of their mission in matters related to sport and general discipline. Chiefs of Mission are responsible to ensure that all members of their mission respect the rules and directives prescribed by CISM and arrangements made by the Organizing Committee. Chiefs of Mission must also enforce the rules concerning behaviour and dress during the ceremonies. The Chiefs of Mission, in all cases, will accept the decision of an International Jury and/or the Jury of Appeal and will not permit or tolerate unpleasant reactions towards the Race Committee, the Protest Committee, the host country and/or other competing nations.



7. PARTICIPATION AND ELIGIBILITY

7.1. A Mission of a nation taking part in a CISM World Military Sailing Championship will normally be constituted as follows:

Chief of Mission	1
Team Captain/Manager	1
Coach	1
Competitors multi sex	2+ (depending on boat type)
Competitors female	2+ (depending on boat type)
Alternate	2. 1 multi sex and 1 female (when the boat type requires only two persons, an alternate must be part of the mission)
Total	9+ (depending on number of competitors)

7.2. **Countries with CSC members** will include them as part of their mission; however, CSC members will **not** be counted in the Mission size. Countries must pay for the travel expenses of their CSC members.

7.3. **Extra personnel** may be brought to a competition after notification to, and approval of, the organizer. The Organizing Committee may refuse to accept extra members where the size of the mission is too great and where facilities are not available to accommodate extra personnel. The Organizing Committee may also refuse members whose function is not in accordance with the team composition described above.

7.4. **Eligibility requirements** for competitors are specified in CISM Policy manual Chapter 3. Competitors must have in their possession a military identification card. The Organizing Committee will check credentials during registration. If credentials are not in order, Missions will have three days to obtain the correct credentials.

8. CHAMPIONSHIP SCHEDULE

8.1. The Organizing Committee will use the following schedule as a guide. Changes may be made to accommodate local circumstances, but the suggested schedule should be followed as closely as possible.

2 Days prior to arrival of nations

- CSC Members arrive (all preparations must be completed before the CSC arrives)
- CSC Meeting with Organizing Committee
- CSC Technical inspection of site and technical equipment

Day 1

- Arrival, registration of missions and credentials check by the Organizing Committee



Day 2

- Preliminary Meeting hosted by the Organizing Committee
- Press Conference
- Practice Races
- Opening Ceremony

Day 3

- Skipper's Meeting
- Practice Racing (Tune up race)
- Racing
- Chief of Mission Dinner

Day 4, 5, 6

- Morning Briefing
- Racing

Day 7

- Racing (Spare Day)
- CSC Enlarged Meeting
- Awards and Closing Ceremonies
- Closing Banquet

Day 8

- Friendship (Cultural) Day (attendance is mandatory for all members of all Missions)

Day 9

- Departure

- 8.2 The Organizing Committee will prepare a detailed program for all participants showing each event, the time, the location, the dress (uniform, casual dress or sports dress), and any special instructions for each event including the location of the Official Notice Board and flagstaff ashore.
- 8.3 The Organizing Committee will co-ordinate any changes to the schedule or Sailing Instructions with the CSC. Changes to the schedule or the Sailing Instructions will be communicated as quickly as possible to the Official CISM Representative, the CSC President, Chiefs of Mission and Team Captains/Managers. A written notice is the preferred method.



9 PRELIMINARY MEETING

9.1 The purpose of the Preliminary Meeting is to deal with all matters related to the organization of the competition.

9.2 Attendance is mandatory for the following:

- ◆ Official CISM Representative;
- ◆ President and members of the CSC;
- ◆ Chairman of the Organizing Committee;
- ◆ Chiefs of Mission of participating countries or their representative;
- ◆ Team Captains/Managers and or Coaches;
- ◆ Chairman of Race Committee and Protest Jury;
- ◆ Key members of the Organizing Committee, as required;
- ◆ Observers

9.3 Suggested Agenda

- ◆ Welcome and introductions.
 - ◆ OCR
 - ◆ President Technical Committee and Members
 - ◆ Chairman Race Committee
 - ◆ Chairman Protest Committee and Members
- ◆ Briefing on the overall program of the competition including ceremonies, meetings, press conferences, study day, social activities, etc.
- ◆ Appointment of the Jury of Appeal.
- ◆ Confirmation of nations in attendance.
- ◆ Drawing of boats. One member of each Mission entered in the Championship must be present for the drawing of the lots. Where Missions are not present, the CSC will draw for them.
- ◆ Other matters of importance.

10 CISM SAILSPORT COMMITTEE ENLARGED MEETING

10.1 The purpose of the CSC Enlarged Meeting is to deal with all matters related to the business of CISM Sailing.

10.2 Attendance is as per paragraph 9.2. Attendance is not mandatory except that the presence of one representative per nation participating in the world championship is required when regulations are to be amended temporarily on the spot. Such an amendment will only be valid for the current championship.



- 10.3 Agenda should include but is not limited to:
- ◆ Amendments of sport regulations.
 - ◆ Means to further promote and develop CISM Sailing.
 - ◆ A review of the CISM Sailing calendar for the next five years.
 - ◆ Experiences of the current championship.
 - ◆ Information on the general program of the next championship.
 - ◆ Regional reports
 - ◆ Africa and Middle East
 - ◆ Americas
 - ◆ Asia
 - ◆ Europe
 - ◆ Other matters of importance.

11 BOATS

- 11.1 An International or National multi-crew class boat will be used in the competition. The type of boat that will be used must be identified by the host nation a minimum of one year prior to the competition. Details with respect to the selected boat must be made available on the Internet. A single-hand dingy can be included in the championship, but will not exclude the multi-crew class.
- 11.2A measurement certificate should be available for each boat used.
- 11.3 The boat will be of a design and configuration in which previous experience in the boat is not a dominating factor in overall performance. The boat will also be of a design and configuration in which extreme athleticism and individual crew weight and size are a minor factor in overall performance. The intent is to allow any skilled racing crew to quickly learn the boat and sail competitively.
- 11.4 There shall be sufficient boats of equal condition and speed for fair competition. The number of boats should be equal to or greater than the number of competitors, plus one spare boat. If the number of boats is less than the number of competitors then a Round Robin boat rotation system shall be used as per the attached Sailing Instructions Annex B.
- 11.5 Drawing of boats will not occur until the rotation schedule has been approved by the CSC and posted on the notice board.



12. COURSE LENGTH AND NUMBER OF RACES

A minimum of twelve races is the desired outcome weather, permitting. Courses should be kept to a reasonable length (shorter rather than longer) to ensure the race schedule is achieved. Where possible, the course should be as close to shore as possible to encourage spectator participation and reduce transit time for boat rotation. Organizing Committees must make every effort to ensure that if boats are to be rotated, that it be done in the most economical manner in terms of time and costs.

13. SUPPORT BOATS

- ◆ Boats for the Race Committee
- ◆ Boats for the Protest Committee and CSC (complete with identifying flags)
- ◆ Boats for the Chiefs of Mission and VIPs
- ◆ Boats for coaches
- ◆ Security boats (safety) and/or mark laying

14. AWARDS

14.1 CISM Sailing Challenge Cup

A trophy will be awarded to the winner of the CISM Sailing Championship. Nations holding this trophy for a year must perform any necessary upkeep have the results of that year engraved and return the trophy in good condition to the host nation prior to the next competition.

14.2 Medals

The official CISM medals shall be awarded to the crews and coaches of the first three boats. In addition to the medals, the organizing country may present prizes of its own choice.

14.3 Badges and Diplomas

As per the CISM Policy and Procedures manuals.

14.4 Fair Play Award

A Fair Play trophy will be awarded to an individual or a team that has shown the most sportive spirit throughout the competition. Nominations for this award shall be submitted by the participating nations (one nomination per nation) to the CSC prior to the final race of the championship. The CSC and the Official CISM Representative will make the final selection.



15. ANTI DOPING CONTROL

- 15.1 Doping is strictly forbidden in CISM.
- 15.2 Anti-Doping controls will be carried out according to the CISM Anti Doping Regulations, Chapter IV in the CISM Policy Manual, based on the latest WADA code.
- 15.3 The number of tests to be carried out at the concerned championship will be decided between the organizer, the CISM Official Representative and the President of the CISM Sailsport Committee. Normally a minimum of 5 tests shall be performed.



ANNEX A

FORMS

The forms and instructions contained in this Annex are to be used in accordance with CISM Policy and Procedures manuals (Updated January 2007), Chapter III, Articles 3.1 to 3.36 (Procedures) and Organizers Guidance (Edition 2007).



INVITATION FILE

- 1 The invitation file must be in accordance with CISM Policy and Procedures manuals and Organizers Guidance on organization CISM MWC (available at CISM website – www.cism-milspport.org/Download/Documents/Guidelines):
 - a. particular provisions applying to the championship;
 - b. registration forms, including (shut be sent to the Organizing Committee with copy to President CISM Sailing Committee)
 - ◆ a preliminary agreement;
 - ◆ a final entry which includes: the Composition of the Mission, Competitor information and Commitment by the Chief of Mission;
 - c. boat specifications, including sail details and website address of class if applicable;
 - d. conditions of sailing area including current, tide, water depth, and geographical influences;
 - e. equipment teams are responsible to personally supply, e.g. compass, tape, shackles, line, shock cord, wind indicators, etc.;
 - f. a map of the locations of the different facilities with distance and directions;



...XXth WORLD MILITARY SAILING CHAMPIONSHIP

PRELIMINARY AGREEMENT

To be returned before day/month/year:

To: Address + contacts of the Organizing Committee

Copy to: President CISM Sailsport Committee

NATION:

[Redacted area]

TOTAL NUMBER OF PARTICIPANTS:

	Officials	Athletes	CSC members	International Referee*	Total
Men					
Women					
Total					

* Please indicate if your country has the opportunity to bring an IJ.

MEANS OF TRANSPORT: _____

DATE: _____

SIGNATURE OF CHIEF OF DELEGATION

RANK/NAME: _____

Your Contact	Rank/Name	
	Phone	
	Fax	
	E-Mail	



..XXth WORLD MILITARY SAILING CHAMPIONSHIP

FINAL ENTRY

To be returned before day/month/year:

To: Address + contacts of the Organizing Committee

Copy to: President CISM Sailsport Committee

NATION :

	PLACE	DATE	FLIGHT Nr. TRAIN Nr. BUS Nr.	TIME
ARRIVAL				
DEPARTURE				

MEANS OF TRANSPORT: _____

DATE: _____

SIGNATURE OF CHIEF OF DELEGATION

RANK/NAME: _____

Your Contact If change to preliminary agreement	Rank/Name	
	Phone	
	Fax	
	E-Mail	



...XXth WORLD MILITARY SAILING CHAMPIONSHIP

FINAL ENTRY - COMPOSITION OF THE MISSION

To be returned before **day/month/year**:

To: Address + contacts of the Organizing Committee

Copy to: President CISM Sailsport Committee

NATION :

	Function	Rank	Sex	Name and Surname	Special remarks, vegetarian, Muslim
1.	Chief of Mission				
2.	Team Captain				
3.	Coach				
4.	Multi sex, sailors				
5.					
6.	Alternate				
7.	Female, sailors		F		
8.			F		
9.		Alternate		F	
10.	Depending of boat				
11.	Depending of boat				
12.	CSC Member				
13.	International Referee				

In strict compliance with applicable CISM Regulations (CISM Policy Manual, Ch.III, art: 3.19), I, the undersigned Chief of Delegation, hereby officially confirm that all athletes representing my nation in the CISM event are on active duty in my nation's Armed Forces. I understand that sanctions may be imposed against my nation, my mission, my team, individual athletes, or me for violation of this provision (CISM Policy Manual Ch1, Art: 1.11).

DATE: _____ : _____
SIGNATURE OF CHEF OF DELIGATION

...Xth CISM WORLD MILITARY SAILING CHAMPIONSHIP



COMPETITOR INFORMATION

To be returned before day/month/year:

To: Address + contacts of the Organizing Committee

Copy to: President CISM Sailsport Committee

NATION :

Last Name		Photo
First Name		
Participation in civilian sailing		
Participation in military sailing		
Coach – Yes <input type="checkbox"/> No <input type="checkbox"/>		
National Judge – Yes <input type="checkbox"/> No <input type="checkbox"/>		
International Judge – Yes <input type="checkbox"/> No <input type="checkbox"/>		
Requires special diet – Yes <input type="checkbox"/> No <input type="checkbox"/> If Yes, please specify.		

DATE: _____

SIGNATURE OF CHIEF OF DELEGATION

RANK/NAME: _____

...Xth CISM WORLD MILITARY SAILING CHAMPIONSHIP



FINAL ENTRY - COMMITMENT BY THE CHIEF OF MISSION

NATION :

The undersigned, Chief of Mission declares that he has read the Article 3.28. of the CISM Policy Manual and moreover understood the following prescriptions:

A. Chief of Mission

1. Chiefs of Mission shall be familiar with CISM regulations.
2. Missions must not only participate or be present at sports events, they are also required to participate in information conferences on CISM, study days, commemorative and cultural events and ceremonies organized by the host nation.

B. Conduct of a mission

1. The Chief of Mission is responsible for the behaviour of his team in sports and general discipline. He shall ensure that members of his mission respect the rules and directives prescribed by CISM and organizers of the championship. The respect of schedules is particularly important as they form the basis for the effective conduct of competitions and ceremonies. Instances of indiscipline or poor sportsmanship will be handled by Championship officials and may result in the disqualification of individual athletes or teams.
2. The Chief of Mission shall also enforce the rules concerning behaviour and dress code during the ceremonies. He plays an important role in promoting the CISM spirit among his mission, a spirit represented by friendly attitude towards other missions, courtesy towards organizers and fair-play in competition. The mission, who does not wear military uniforms during the opening ceremony of a Championship, will not be authorised to take part in the Championship. The Official CISM Representative will communicate this decision.
3. In conformity with the Statutes and traditions of CISM, any political or religious action during a CISM event, in particular the dissemination of propaganda documents, pictures, brochures, reviews, etc, is strictly forbidden. Any contravention shall result in the exclusion of the mission from further competition.

DATE: _____ : _____
SIGNATURE OF CHIEF OF DELEGATION

RANK/NAME: _____



ANNEX B

SAMPLE SAILING INSTRUCTIONS



**CONSEIL INTERNATIONAL DU SPORT MILITAIRE
(CITY AND COUNTRY) (INCLUSIVE DATES)**

SAILING INSTRUCTIONS

1 RULES

- 1.1 The regatta will be governed by the current ISAF Racing Rules of Sailing (RRS), the prescriptions of the CISM Sports Regulations, the Sailing Regulations, the rules of the *(type of boat)* class except as altered by these sailing instructions and CISM Policy and Procedures manuals. The regatta is designated Category C.

2 ENTRIES

- 2.1 Eligibility requirements for competitors are as per CISM Policy and Procedures manuals – Article 3.21 – 3.23 (Policy).

3 NOTICES TO COMPETITORS

- 3.1 Notices to competitors will be posted on the official notice board(s) located *(identify the specific location(s))*. Official notice boards shall be located at the sailing site and at the accommodation area when the two are not within a reasonable distance of each other. Posted on this (these) notice board(s) shall also be the names of the TC members and their location.

4 CHANGES IN SAILING INSTRUCTIONS

- 4.1 Any change to the sailing instructions will be posted before *(time)* on the day it will take effect, except that any change to the schedule of races will be posted by *(time)* on the day before it will take effect.

5 SIGNALS MADE ASHORE

- 5.1 Signals made ashore will be displayed at *(specific location)*.
- 5.2 Flag AP fully hoisted with two sound signals (one sound signal when lowered) means "The race is postponed" The warning signal will be made not less than *(number)* minutes after AP is lowered.
- 5.3 Flag B fully hoisted with one sound signal means "Protest Time has begun." When lowered half way, it means, "There are less than 30 minutes remaining before protest time ends." When lowered it means "Protest time has ended."
- 5.4 Flag Y fully hoisted with one sound signal means "All sailors are required to wear personal buoyancy at all times on the water."

6 RACE SCHEDULE

- 6.1 A competitor information meeting will be held at *(place)* on *(date, time)*.



6.2 The first warning signal each day will be at *(time)*. The remaining races each day will begin as soon as possible after the finish of the previous race allowing sufficient time for boat rotation.

7 BOAT ROTATION

7.1 Boat rotation shall occur after each race in accordance with the schedule at Illustration A, attached.

8 THE COURSE

8.1 The diagrams shown in Illustrations B, C and D, attached show the course(s), including the approximate angles between legs, the order in which marks are to be passed, and the side on which each mark is to be left.

8.2 The approximate compass bearing from the starting line to Mark 1 will be displayed from the race committee boat, at starts.

9 RACING AREA

9.1 The racing area will be as shown in Illustration E, attached.

10 MARKS

10.1 Marks 1, 2, and 3 will be *(describe marks)*. New marks, as provided in instruction 13 Change of Course after the Start, will be *(describe marks)*. The starting and finishing marks will be *(describe marks)*.

11 THE START

11.1 Races will be started using rule 26, with classes starting at five (5) minute intervals in the order *(insert class names in order of starting)*.

11.2 The starting line will be between a staff displaying an orange flag or shape on the race committee boat at the starboard end and the port end starting mark.

11.3 Boats whose preparatory signal has not been made shall keep clear of the starting area and of all boats whose preparatory signal has been made.

11.4 A boat shall not start later than four (4) minutes after her starting signal.

12 MARK BOATS

12.1 Mark boats will be stationed beyond each mark. At the finish, the mark boat will be stationed beyond the finishing line. When on station only, each mark boat will display a *(description of the flag or shape)*. Failure of a mark boat to be on station or to display her signal will not be grounds for redress. This changes rule 62.1(a).

13 CHANGE OF COURSE AFTER THE START

13.1 A change of course after the start will be signalled before the leading boat has begun the leg,



although the new mark may not then be in position. Any mark to be rounded after rounding the new mark may also be relocated to maintain the original course configuration. When in a subsequent change of course a new mark is replaced, it will be replaced with an original mark.

14 THE FINISH

14.1 The finishing line will be between a staff displaying an orange flag or shape on a race committee boat and the port-end finishing mark.

15 TIME LIMIT

15.1 Boats failing to finish within 30 minutes after the first boat finishes will be scored Did Not Finish (DNF). This changes rule 35.

16 PROTESTS

16.1 Protests shall be written on forms available at the race office and delivered there within (*time*) after the time of the last boat's finish.

16.2 Protests will be heard in approximately the order of receipt as soon as possible.

16.3 Protest notices will be posted within 30 minutes of the protest time limit to inform competitors where and when there is a hearing in which they are parties to a hearing or named as witnesses.

17 SCORING

17.1 The Low Point scoring system, rule A 4, will apply (first place - 1 point, second place - 2 points, third place - 3 points and so on) modified so that each boat's series score will be the total of her race scores. For every five races completed, one drop race will be permitted. Note - RRS A 1. Three races shall be completed to constitute a series.

18 RECALLS AND OTHER SIGNALS

18.1 Individual recalls will be signalled using Flag X and one sound signal.

18.2 General recalls will be signalled using the First Substitute with two sound signals. When a general recall has been signalled, the new preparatory signal for the recalled fleet will be made one minute after lowering the First Substitute.

19 EQUIPMENT

19.1 Boats and equipment shall not be altered, modified or changed from the state in which they are supplied by the organisers. This includes but is not limited to: changing of sails, rudders or centreboards; drilling of any holes in hulls or spars; moving any equipment or fixtures which are permanently screwed or bolted to the hull or spars and which are not designed to be adjusted.

19.2 Permissible changes:

19.2.1 Any changes or additions allowed under this rule shall be effected in such a manner as to permit easy installation and removal without any permanent modification to the boat. Any changes must



- conform to the Class Rules;
- 19.2.2 Each boat may carry one or two magnetic or digital tactic compasses. Use of Global Positioning Systems (GPS) or any other type of electronic navigational calculator is prohibited;
- 19.2.3 Wind indicators and tell tales may be added as required;
- 19.2.4 Boats and foils (rudders, centreboards) may be washed with soap and water, but may not be wet-sanded, waxed or buffed with rubbing compound;
- 19.2.5 Shock cord and short pieces of line may be added as required; however, no lines supplied with the boat may be replaced. For example, lines may be added to lengthen hiking straps, but replacement jib sheets may not be used;
- 19.2.6 Tape may be used as required.
- 19.3 The CSC will inspect boats prior to the competition and on a regular basis thereafter and will disallow any modifications which it believes fall beyond these permissible changes. Competitors shall bring any concerns regarding either their own boat or other competitors' boats to the CSC's attention as soon as possible, and preferably before racing. The CSC's decision is final and may not be redressed. If at any time a CSC member is unavailable to inspect the boats or be advised of a problem, the next level of jurisdiction in these matters will be a member of the protest committee.

20 SUPPORT BOATS

- 20.1 Team leaders, coaches and other support personnel shall not be in the racing area from the time of the preparatory signal for the first class to start until all boats have finished or the race committee signals a postponement, general recall or abandonment. The penalty for failing to comply with this requirement will be *(insert "the disqualification of" or "points for # of additional places added to the scores of". In the latter case, insert the number of places)* all boats associated with the support personnel who do so.



Illustration A

Sample scheme of irregular rotations, (Round Robin) for 15 nations and 12 boats.

NATION	RACE									
	I	II	III	IV	V	VI	VII	VIII	IX	X
A	-	12	2	3	6	-	10	9	4	8
B	-	1	3	4	7	11	-	12	9	5
C	-	2	4	5	8	12	7	-	6	9
D	1	-	5	6	9	3	8	11	-	4
E	2	-	6	7	10	4	9	1	11	-
F	3	-	7	8	11	-	6	4	1	2
G	4	3	-	9	12	5	-	10	2	6
H	5	4	-	10	1	6	11	-	8	3
I	6	5	-	11	2	7	1	8	-	10
J	7	6	8	-	3	10	2	5	12	-
K	8	7	9	-	4	-	12	6	10	11
L	9	8	10	-	5	1	-	3	7	12
M	10	9	11	12	-	2	3	-	5	1
N	11	10	12	1	-	8	4	2	-	7
O	12	11	1	2	-	9	5	7	3	-

The rotation plan shall be made in such a way that:

- a. Each team will sail a different boat in every race.
- b. Each team will only receive a boat from another country one time.
- c. Teams not sailing will be different each time.

NOTE: The organising country may request assistance from the CSC to draft the rotation table.



Illustration B

(List only the options that will be used and ensure the diagram reflects these options.)

This course is frequently used. Options include:

- varying the interior angles of the triangle (45° - 90° - 45° and 60° - 60° - 60° are common);
- deleting the last windward leg;
- using a gate instead of a leeward *mark* for downwind legs (not reaches);
- using an offset *mark* at the beginning of downwind legs (not reaches); and,
- using the leeward and windward *mark* as starting and finishing *marks*. Be sure to specify the interior angle at each *mark*.

Start - 1 - 2 - 3 - 1 - 3 - Finish

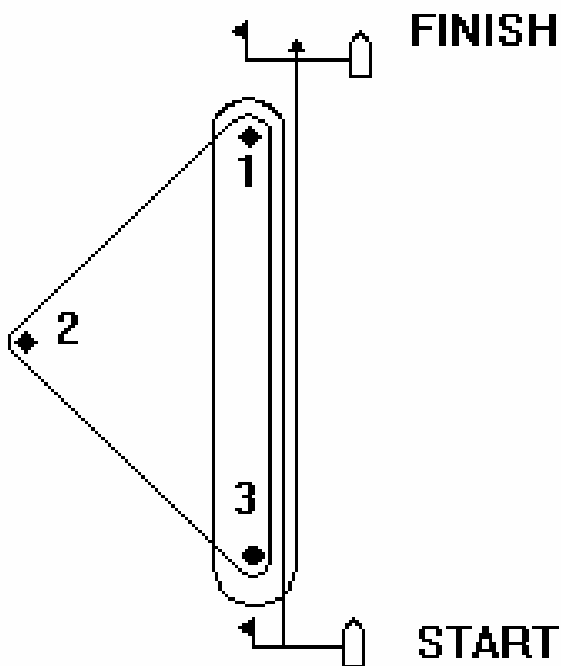




Illustration C

(List only the options that will be used and ensure the diagram reflects these options.)

This course is frequently used. Options include:

- a. increasing or decreasing the number of laps;
- b. deleting the final windward leg;
- c. using a gate instead of a leeward *mark*;
- d. using an offset *mark* at the windward *mark*; and,
- e. using the leeward and windward *marks* as starting and finishing *marks*, respectively.

Start - 1 - 3 - 1 - 3 - Finish

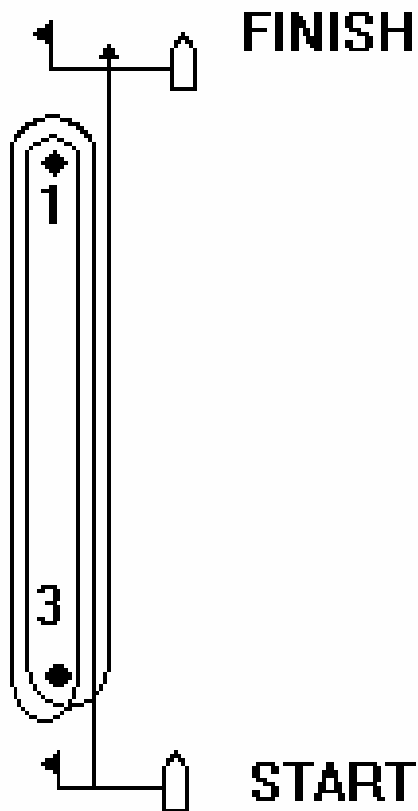




Illustration D

(List only the options that will be used and ensure the diagram reflects these options.)

This course is frequently used. :

